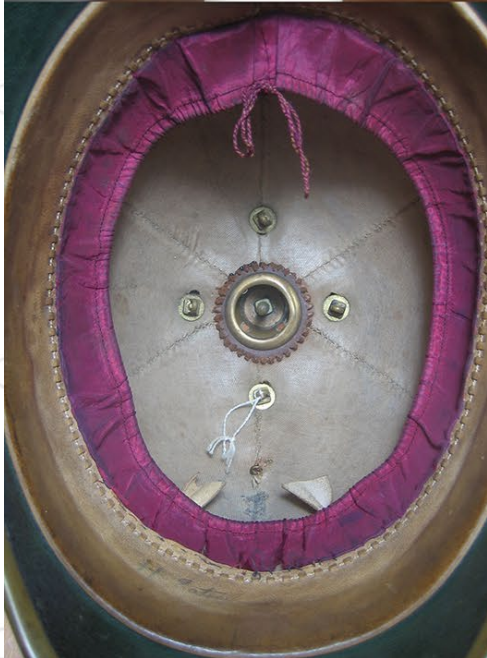


ROYAL SUSSEX REGIMENT OFFICER'S BLUE CLOTH HELMET



A good example c.1881-1901, the scull complete with all gilt fitting, the frontal plate of crowned star pattern with laurel and Garter overlays, to the centre combined Garter Star and rousillon plume, title scroll below 'The Royal Sussex Regiment', inner leather sweat band with silk lining velvet lined chin chain, gilt worn and the frontal plate, whilst an original piece, may not be original to the helmet as the inside of the helmet shows signs of a possible previous attachment a few mm's off. However the outside of the helmet show no signs whatsoever of this. The owners name 'H. Eaton' is written (faintly) in ink to liner.





Condition is very good, silk liner coming away a little for a couple of cm towards peak, otherwise solid